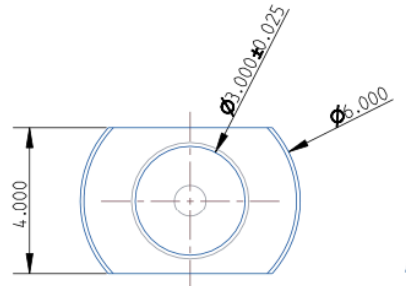


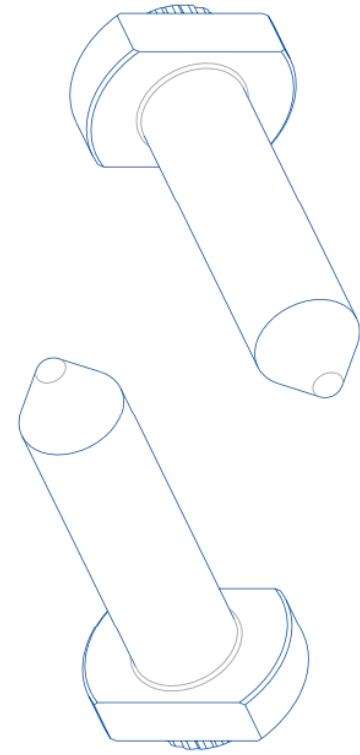
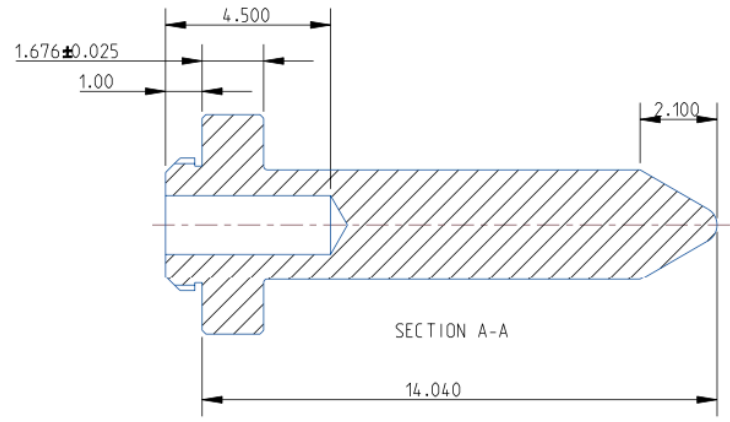
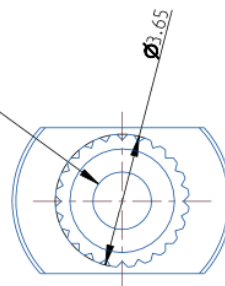
This document consists of proprietary information and is confidential. Any use, reproduction, distribution, or disclosure of this information is strictly prohibited without the express written consent of PISAS.

COPYRIGHT PERFORMANCE INTERCONNECT SAS 2025. All Rights Reserved.

| REV. | DESCRIPTION           | DATE      | APPROVAL |
|------|-----------------------|-----------|----------|
| 1    | RELEASE FOR PROTO RUN | Jun-14-25 |          |



#2-56 UNC-2B  
 ▽3.56 MIN.



| UNLESS OTHERWISE SPEC.   | APPROVAL                         | DATE      |
|--|----------------------------------|-----------|
| DIMENSIONS ARE IN MM<br>TOLERANCES ON<br>WHOLE No. +/-<br>DECIMAL:<br>.X +/- 0.20<br>.XX +/- 0.10<br>.XXX +/- 0.05<br>.XXX +/-<br>ANGLE +/- HOLE DIA. +/- 0.08<br>MAXIMUM WARP 0.10 PER<br>100mm OF LENGTH | DRAWN                            | Jun-14-25 |
|  | CHECKED                          |           |
|  | PROJ.ENG.                        |           |
|  | MANUF.ENG.                       |           |
|  | Q.A.                             |           |
| MATERIAL: C28000 BRASS   | REMOVE ALL BURRS AND SHARP EDGES |           |
| FINISH: Nickel electroplate  | DO NOT SCALE DRAWING             |           |

|   |                      |        |
|---|----------------------|--------|
| PERFORMANCE INTERCONNECT SAS              |                      |        |
| TITLE:<br>VN <sub>X</sub> + ALIGNMENT PIN |                      |        |
| SIZE: B                                   | PART NO. NBBUB370ZZB | REV. 1 |
| SCALE: 7.000                              | SHEET 1 OF 1         |        |